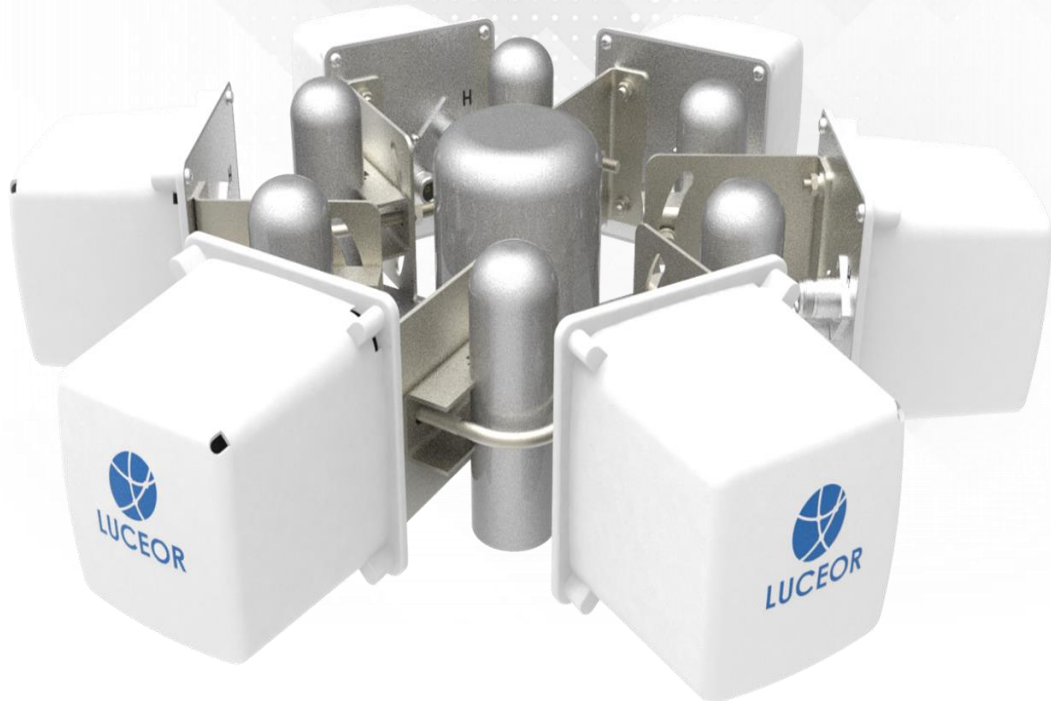


## SA25-0810

### SMART ANTENNA 2.4/5.8 GHz (6 x 60°) 10dBi



The SA25-10 is a smart antenna that combines six dual-band (2.4/5.8 GHz) 60° antennas to increase the coverage area and maximize the throughput for point-to-point, point-to-multipoint and mesh applications. Each of the six antennas can be fed individually via two N-Female ports one for vertically polarized and one for horizontally polarized signals which makes this antenna ideal for polarization diversity systems. In addition, each antenna can be adjusted individually up or down (0° to 30°) to be positioned for optimal performance. The sectorized antenna is designed for outdoor environments. It features wide temperature range, UV-protected ABS radomes and drain holes to help prevent moisture build-up inside the antenna.

## SINGLE SECTOR ANTENNA 60° SPECIFICATIONS

### ELECTRICAL

<b>FREQUENCY</b>	2.4-2.5 / 4.9– 5.85 GHz
<b>GAIN</b>	8 dBi @ 2.4GHz / 10 dBi @ 4.9-5.8 GHz
<b>VSWR</b>	< 2.0 (V-POL) / < 2.3 (H-POL)
<b>HPOL BEAMWIDTH</b>	90° @ 2.4GHz / 70° @ 4.9-5.8 GHz
<b>VPOL BEAMWIDTH</b>	57° @ 2.4GHz / 42° @ 4.9-5.8 GHz
<b>POLARIZATION</b>	Vertical and Horizontal
<b>ISOLATION</b>	> 28 dB
<b>FRONT TO BACK RATIO</b>	≥ 15dB
<b>MAX. POWER</b>	50 W
<b>IMPEDANCE</b>	50 Ohm
<b>LIGHTNING PROTECTION</b>	DC Ground

### MECHANICAL

<b>RADOME</b>	UV-Protected ABS
<b>DIMENSIONS</b>	104 x 104 x 90 mm 4 x 4 x 3.5 in.
<b>ANTENNA WEIGHT</b>	0.5 kg 1.1 lbs
<b>MOUNTING BRACKET WEIGHT</b>	0.18 kg 0.4 lbs
<b>CONNECTORS</b>	2 x Integral N-Female
<b>ELECTRICAL DOWNTILT</b>	0-30°
<b>OPERATING TEMPERATURE</b>	-40°C to 65°C -40°F to 149°F
<b>WIND LOADING</b>	210 km/h (130 mph)
<b>MOUNTING</b>	25.4 to 43.2 mm (1 to 1.7 in.) dia. Masts

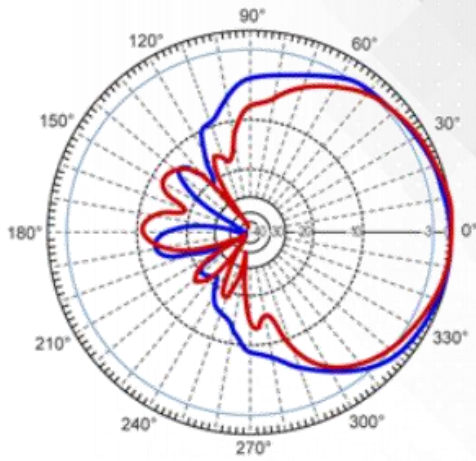
### COMPLIANCE

<b>RoHS COMPLIANT</b>	Yes
-----------------------	-----

### SINGLE SECTOR ANTENNA 60° PATTERNS

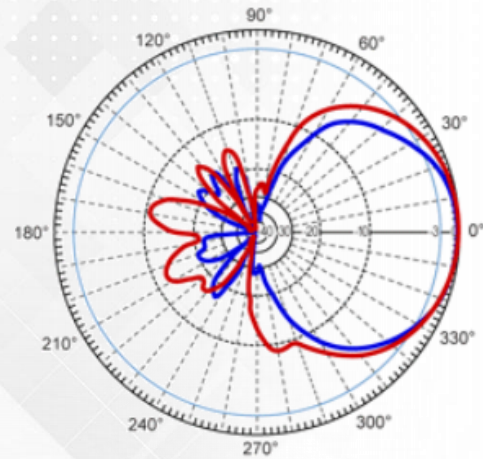
Azimuth

Elevation



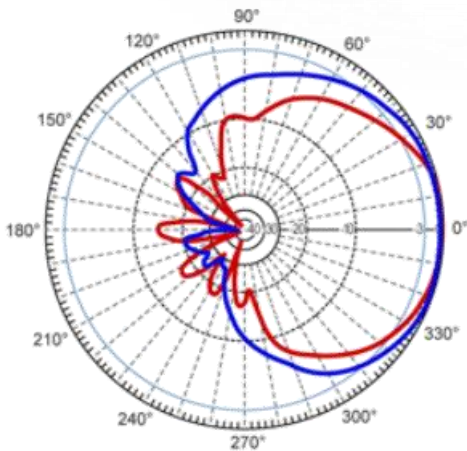
2.4GHz

— Vertical Polarization  
— Horizontal Polarization



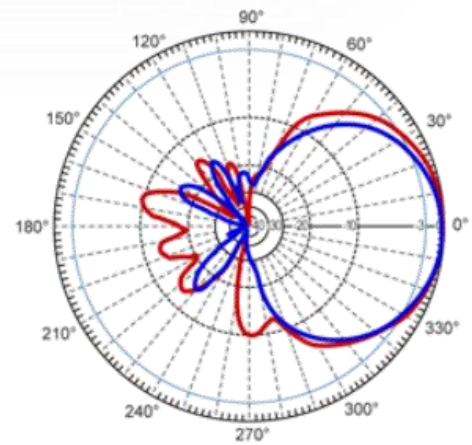
Azimuth

Elevation



2.5GHz

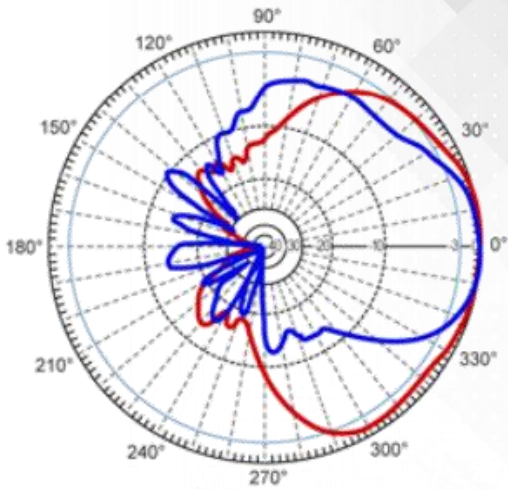
— Vertical Polarization  
— Horizontal Polarization



### SINGLE SECTOR ANTENNA 60° PATTERNS

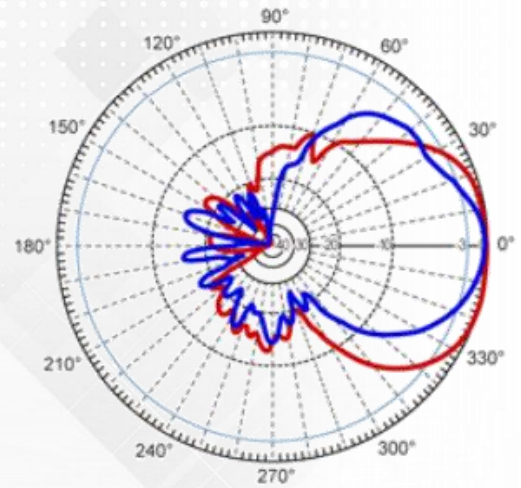
Azimuth

Elevation



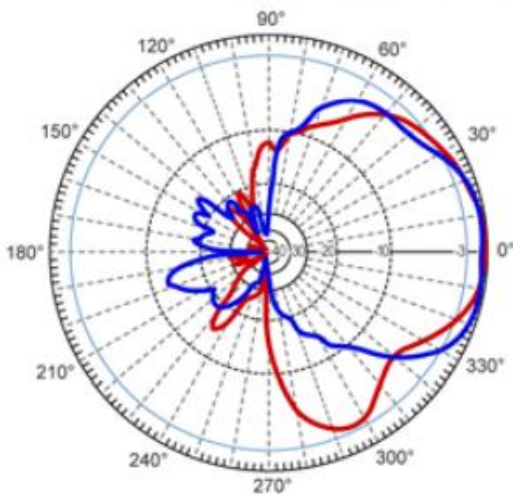
4.9GHz

— Vertical Polarization  
— Horizontal Polarization



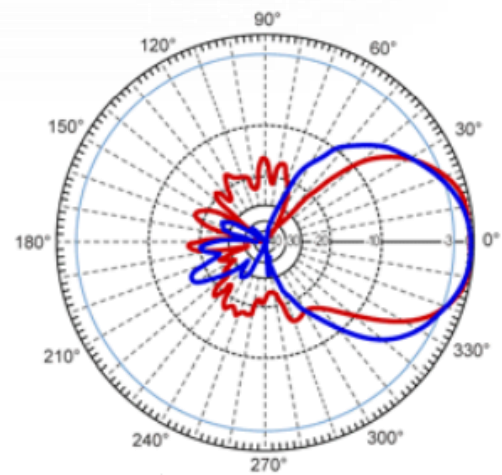
Azimuth

Elevation



5.4GHz

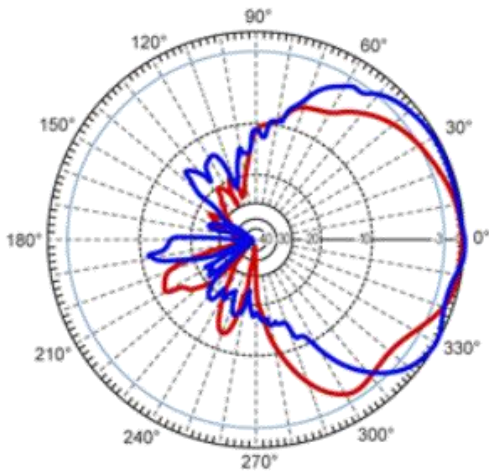
— Vertical Polarization  
— Horizontal Polarization



## SINGLE SECTOR ANTENNA 60° PATTERNS

Azimuth

Elevation



5.85GHz

— Vertical Polarization  
— Horizontal Polarization

